



85 Downall Green Road

Ashton-In-Makerfield, Wigan, WN4 0DL

£775 PCM



It is with pleasure that we can offer this newly modernised and well appointed 3 bedroom mid terraced home in a popular area of Ashton in Makerfield and offers close proximity to local schools and amenities, is a short drive from the centre of Ashton in Makerfield and a few minutes to the East Lancashire Road and motorway network for those requiring commuter links. . The property comprises of entrance / hallway, spacious lounge, dining room / reception 2 which leads into a modern fitted kitchen with door leading to the rear elevation. To the first floor there are 2 spacious bedrooms and a family bathroom with four piece suite in white. The property is warmed by gas central heating and also benefits from UPVC double glazing throughout and a tasteful décor with newly refreshed paint and flooring. Externally there are small low maintenance gardens and there is on street parking. Early internal viewing is highly recommended to appreciate in full. No Smoking.



GROUND FLOOR

Entrance / Hallway

Lounge

Dining / Reception 2

Kitchen

Bathroom

FIRST FLOOR

Landing

Bedroom 1

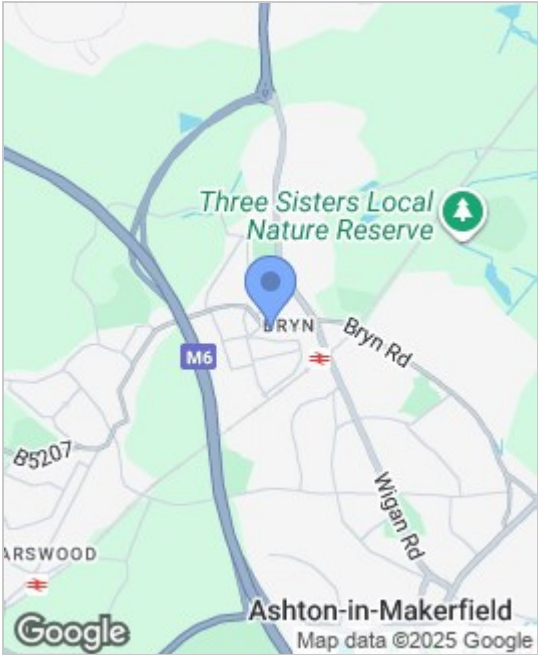
Bedroom 2

Bedroom 3

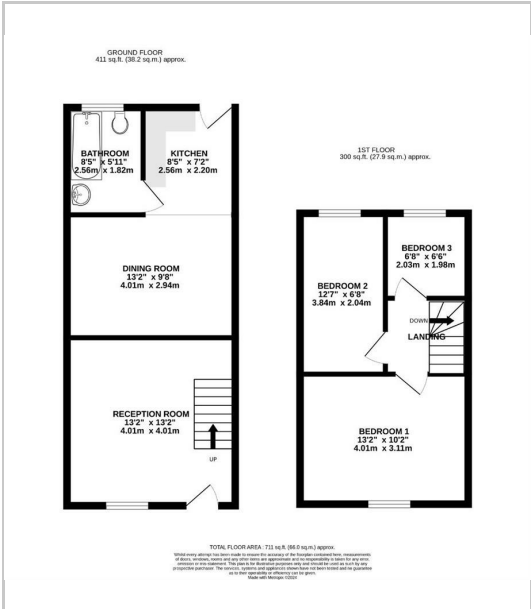
EXTERNAL

Patio Garden

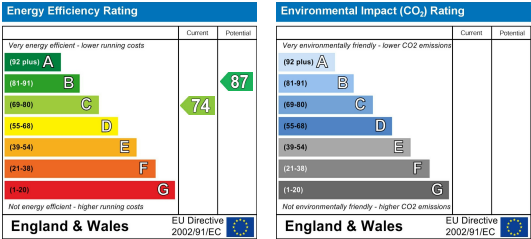
Area Map



Floor Plans



Energy Efficiency Graph



These particulars, whilst believed to be accurate are set out as a general outline only for guidance and do not constitute any part of an offer or contract. Intending purchasers should not rely on them as a representation of fact, but must satisfy themselves by inspection or otherwise as to their accuracy. No person in this firms employment has the authority to make or give any representation or warranty in relation to the property.