



229 Wigan Road

Aspull, Wigan, WN2 1DU

Asking Price £165,000



Sapphire Homes are pleased to offer For Sale this well maintained 3 bedroom semi detached home that is located in a popular residential location and close to excellent local schools and amenities and also within easy reach of the M61 motorway and is close to Haigh Hall country park and lovely walks along the Leeds Liverpool canal. Internally the accommodation briefly comprises entrance hallway, lounge with through dining room, separate fitted kitchen, three bedrooms and bathroom with three piece shower suite. Externally there is a driveway providing off road parking and to the rear is a low maintenance and private enclosed garden. The property is warmed by Gas Central Heating and other benefits include UPVC double glazing and a neutral décor throughout. Early internal viewing is highly recommended to appreciate in full.





GROUND FLOOR

Entrance / Hallway

Lounge

Dining Area

Kitchen

FIRST FLOOR

Landing

Bedroom 1

Bedroom 2

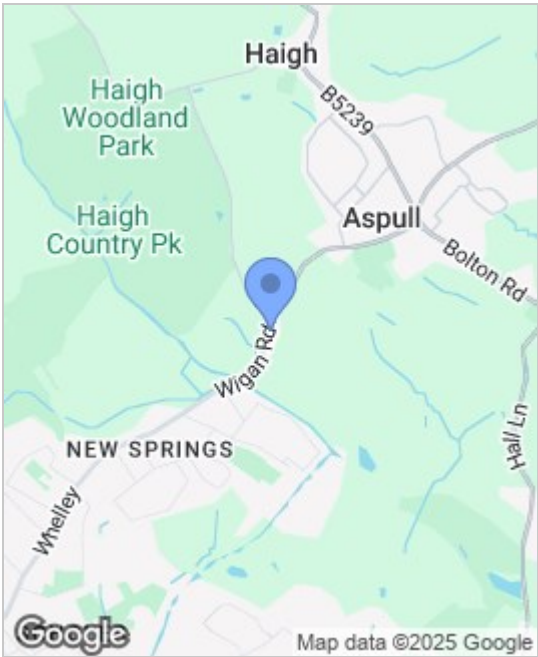
Bedroom 3

Bathroom

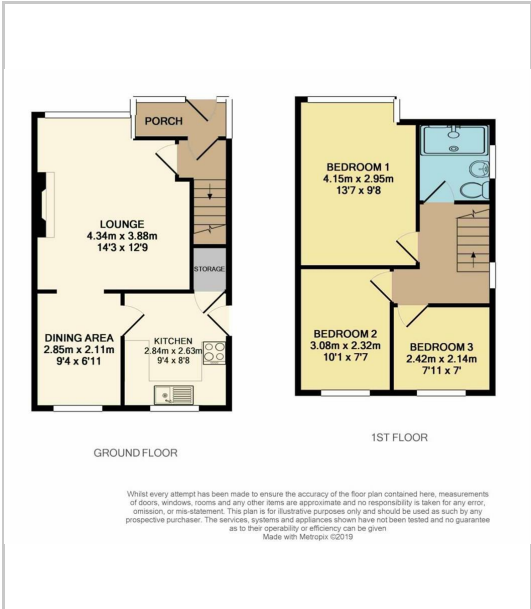
EXTERNAL

Rear Garden

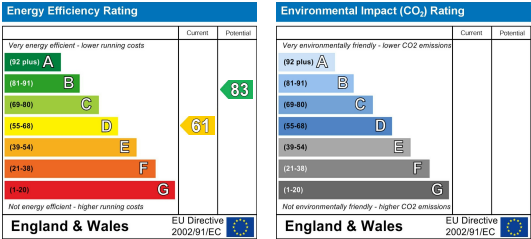
Area Map



Floor Plans



Energy Efficiency Graph



These particulars, whilst believed to be accurate are set out as a general outline only for guidance and do not constitute any part of an offer or contract. Intending purchasers should not rely on the representation of fact, but must satisfy themselves by inspection or otherwise as to their accuracy. No person in this firms employment has the authority to make or give any representation or warranty on behalf of the property.

