



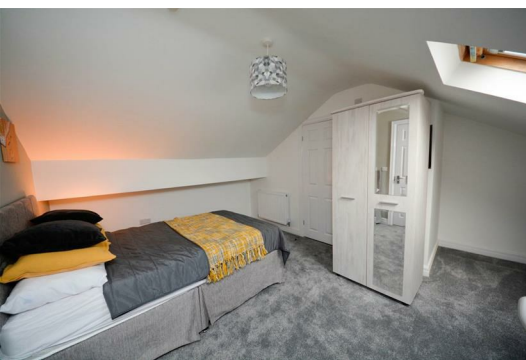
50 Hardshaw Street

, St. Helens, WA10 1JN

£135 Per Week



STUNNING TOP FLOOR ENSUITE LUXURY FURNISHED BEDROOM **MUST VIEW** ****BILLS INCLUDED - COUNCIL TAX, GAS, ELECTRICITY, WATER, HIGH SPEED WIFI, TV's IN BEDROOMS** It is with pleasure that Sapphire Homes are in a position to offer this Stunning Ensuite Bedrooms in a stunning HMO conversion. The property is close to the heart of St Helens town centre, a few minutes walk from the Train Station as well as local amenities and transport links. The property is Fully furnished throughout all with high quality furnishing and fixtures as well as all bills included in the rental figure. There is a generous and luxurious modern fitted kitchen / dining / living area. Each bedroom / ensuite which has a secure lock on their door, carpeted flooring throughout, tasteful decor and excellent furnishings including wall mounted TV's included in each room. Externally the property has a garden area to front and rear and this property would suit professional. Early internal viewings are highly recommended to appreciate in full. No Pets. No Smokers.



GROUND FLOOR

- Entrance / Hallway
- Living / Kitchen / Dining
- Bedroom 1
- Bedroom 2

FIRST FLOOR

- Bedroom 3
- Bedroom 4
- Bedroom 5

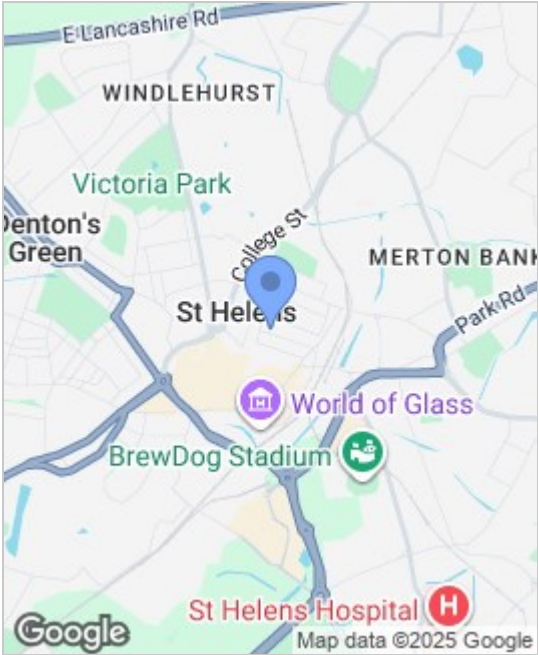
SECOND FLOOR

- Bedroom 6

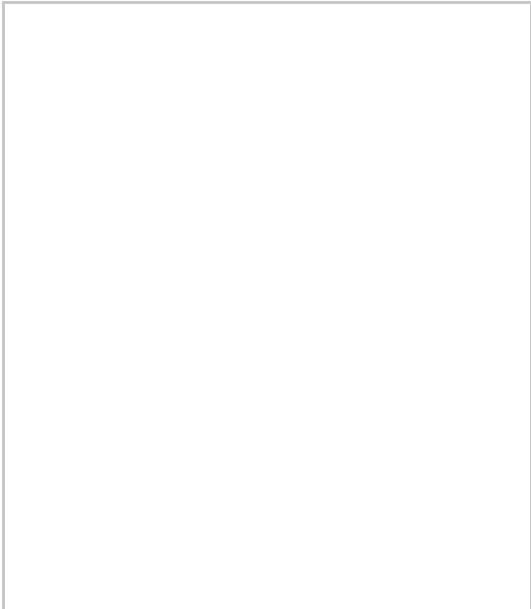
EXTERNAL

- Rear Garden

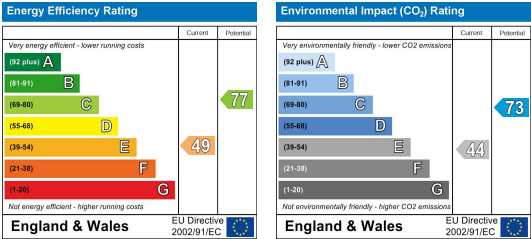
Area Map



Floor Plans



Energy Efficiency Graph



These particulars, whilst believed to be accurate are set out as a general outline only for guidance and do not constitute any part of an offer or contract. Intending purchasers should not rely on them as a representation of fact, but must satisfy themselves by inspection or otherwise as to their accuracy. No person in this firms employment has the authority to make or give any representation or warranty in relation to the property.

