



4a Sherwood Crescent

Platt Bridge, Wigan, WN2 5AJ

£950 PCM



Sapphire Homes are delighted to be in a position to offer this well presented 3 bedroom unfurnished semi detached property in a popular residential location close to local amenities & transport links. The accommodation briefly comprises of entrance / hallway leading to a generous sized lounge with modern fitted dining / kitchen with integrated appliances to the rear elevation. To the first floor there are 3 good sized bedrooms, master with en-suite shower room and family bathroom with modern three piece suite in white. The property benefits from UPVC double glazed windows and Gas Central Heating throughout as well as a neutral decor which only helps to compliments this wonderful family home. To the front of the property is a small lawn area and to the rear there is off road parking, lawn and decking area. Early viewing is highly recommended to appreciate this property in full. No Pets.



GROUND FLOOR

Entrance / Hallway

Downstairs WC

Lounge

Kitchen / Diner

FIRST FLOOR

Master Bedroom

Master Ensuite

Bedroom 2

Bedroom 3

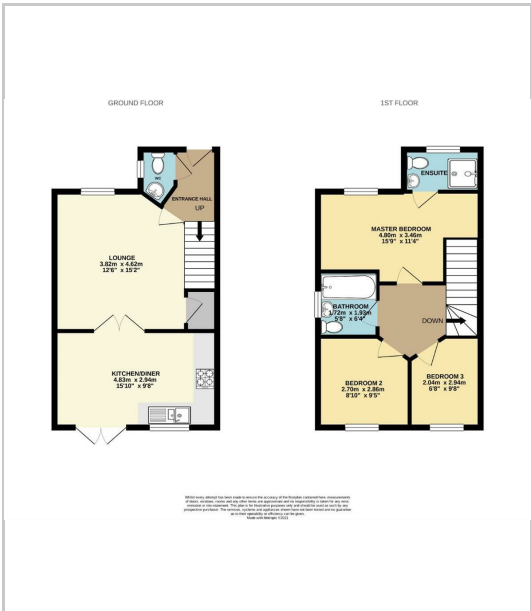
Bathroom

EXTERNAL

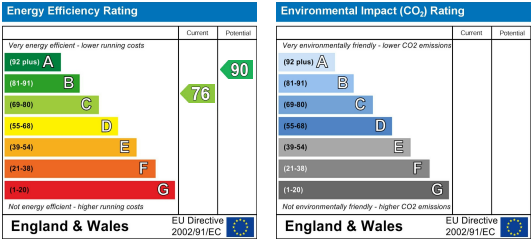
Area Map



Floor Plans



Energy Efficiency Graph



These particulars, whilst believed to be accurate are set out as a general outline only for guidance and do not constitute any part of an offer or contract. Intending purchasers should not rely on the representation of fact, but must satisfy themselves by inspection or otherwise as to their accuracy. No person in this firms employment has the authority to make or give any representation or warranty in relation to the property.

