



2 Orrell Hall Close

Orrell, Wigan, WN5 0DL

£900 PCM



Sapphire Homes are delighted to be in a position to offer For Rent this immaculately presented 2 bedroom unfurnished semi detached family home in popular location that is situated close to local schools, amenities & transport links included the M6 and M58 motorway and all the networks this provides access too. The accommodation briefly comprises porch / entrance vestibule leading to bright and welcoming lounge with through dining area and a modern fitted kitchen to the rear elevation with access leading to the rear garden. To the first floor there is access to two double bedrooms from the landing area and a bathroom with modern three piece suite in white and shower over bath. The property is warmed by Gas Central Heating and also benefits from double glazing throughout. Off road parking to the rear. Large corner plot with generous well maintained garden to the front, side and rear. Internal viewings are highly recommended to appreciate in full. No Smoking.



GROUND FLOOR

Entrance / Vestibule

Lounge / Diner

Kitchen

FIRST FLOOR

Landing

Master Bedroom

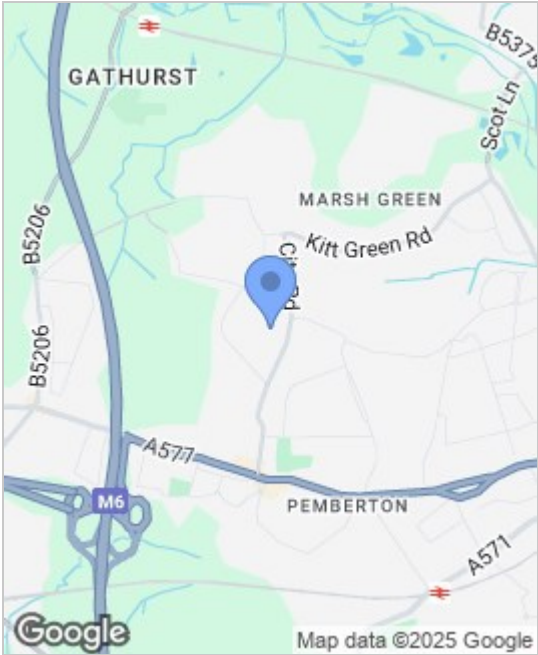
Bedroom 2

Bathroom

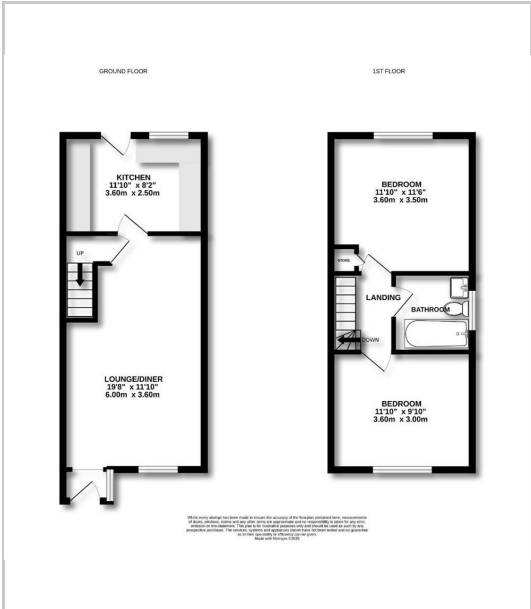
EXTERNAL

PARKING

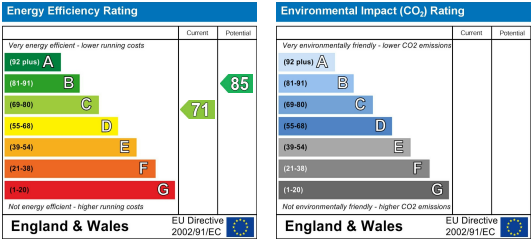
Area Map



Floor Plans



Energy Efficiency Graph



These particulars, whilst believed to be accurate are set out as a general outline only for guidance and do not constitute any part of an offer or contract. Intending purchasers should not rely on them as a representation of fact, but must satisfy themselves by inspection or otherwise as to their accuracy. No person in this firm's employment has the authority to make or give any representation or warranty in relation to this property.

