



16 Blackthorn Avenue

Springfield, Wigan, WN6 7SA

Offers In The Region Of £170,000



Sapphire Homes are delighted to offer For Sale this wonderfully maintained 3 bedroom semi detached family home that is located in a sought after area of Beech Hill and offers close proximity to local schools, amenities and transport links. The property has a tasteful décor throughout and offers a modern standard of living which excellent value for money. In brief the property comprises of a porch which leads to entrance / hallway, generous lounge with feature wood burner and to the rear elevation is an open plan modern fitted kitchen / dining room with French doors leading to the rear garden. To the first floor the landing provides access to two double bedrooms and a family bathroom with three piece suite in white with shower over bath. To the second floor is a dormered loft room with window to the rear elevation. The property is warmed by Gas Central Heating and also boasts a modern tasteful décor and UPVC double glazing throughout. To the front elevation is a driveway which has been newly laid and provides ample off road parking and leads to a single garage to the side elevation. To the rear there is a good sized garden which offers lots of potential for landscaping and has a patio area and large lawned area with perimeter fencing. The property is perfect for couple or family and early internal viewing is a must to appreciate in full.



GROUND FLOOR

Entrance / Hallway

Lounge

Kitchen / Diner

FIRST FLOOR

Landing

Bedroom 1

Bedroom 2

Bathroom

SECOND FLOOR

Loft Room / Bedroom 3

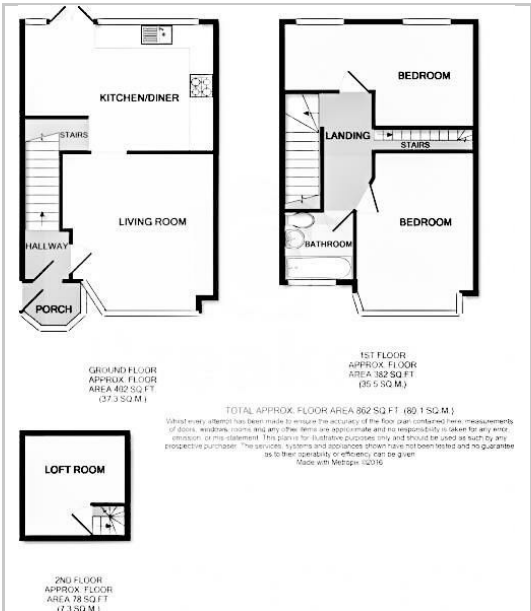
EXTERNAL

Rear Garden

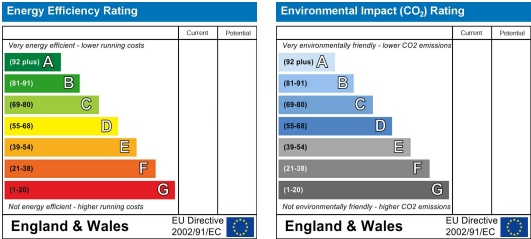
Area Map



Floor Plans



Energy Efficiency Graph



These particulars, whilst believed to be accurate are set out as a general outline only for guidance and do not constitute any part of an offer or contract. Intending purchasers should not rely on them as a representation of fact, but must satisfy themselves by inspection or otherwise as to their accuracy. No person in this firms employment has the authority to make or give any representation or warranty in relation to the property.

