



706 Ormskirk Road

Pemberton, Wigan, WN5 8BB

£700 PCM



Well presented 2 bedroom mid terraced home in popular residential location and situated close to local schools, amenities and transport links including Pemberton Train Station and the M6 and M58 making it ideal for those requiring commuter links. The property is tastefully presented throughout and the accommodation briefly comprises lounge, dining room and modern fitted kitchen / diner to the rear elevation. To the first floor there are two large double bedrooms and a family bathroom with modern three piece and shower over bath. This property also boasts gas central heating, double glazing and low maintenance garden to the rear. Internal viewing is a must to appreciate in full. No Pets. No Smoking.



GROUND FLOOR

Lounge

Dining Room

Kitchen

FIRST FLOOR

Landing

Bedroom 1

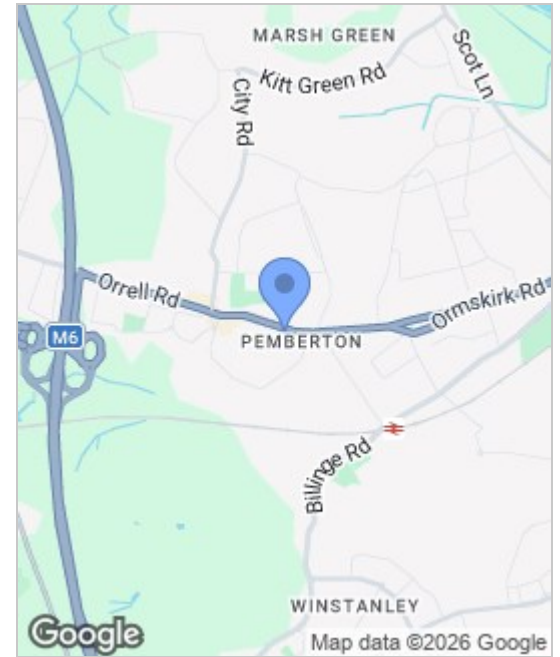
Bedroom 2

Bathroom

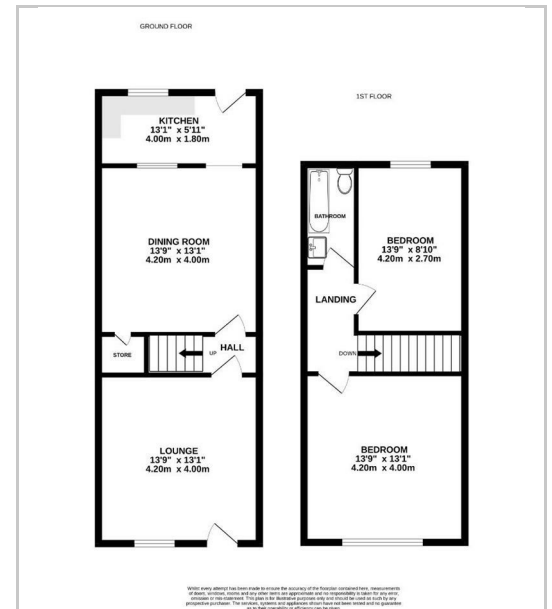
EXTERNAL

Rear Garden

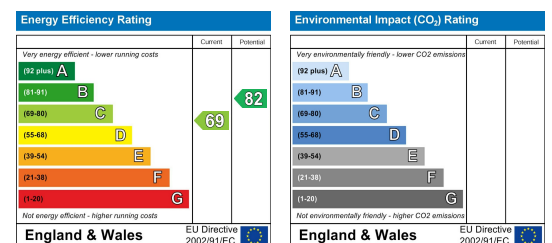
Area Map



Floor Plans



Energy Efficiency Graph



These particulars, whilst believed to be accurate are set out as a general outline only for guidance and do not constitute any part of an offer or contract. Intending purchasers should not rely on the representation of fact, but must satisfy themselves by inspection or otherwise as to their accuracy. No person in this firm's employment has the authority to make or give any representation or warranty in relation to the property.



Sapphire Homes (North) Ltd 80 Market Street, Wigan WNI 1HX
 T 01942 494944 E info@sapphirehomes.co.uk W www.sapphirehomes.co.uk VAT 183 759 366

specialists in sales, Lettings & Property Investments