



62 Camberwell Crescent

Whelley, Wigan, WN2 1AT

Offers Over £150,000



Sapphire Homes are delighted to offer For Sale this 3 bedroom semi detached family home that is located in a popular residential area within close proximity to excellent local schools, amenities and transport links including a short drive from Wigan Town Centre or the M61. Internally the accommodation briefly comprises of entrance / hallway, W.C., generous lounge with fire and surround and to the rear there is a kitchen / dining area with door leading to the rear garden. To the first floor the landing offers access to three good sized bedrooms and bathroom with two piece suite and shower over bath. Externally there are low maintenance gardens to the front and rear and driveway providing off road parking. The property does require some modernisation throughout but offers huge potential and early internal viewings are invited to avoid disappointment. Offered to market with No Upward Chain.



GROUND FLOOR

Entrance / Hallway

W.C.

Lounge

Kitchen / Diner

FIRST FLOOR

Landing

Bedroom 1

Bedroom 2

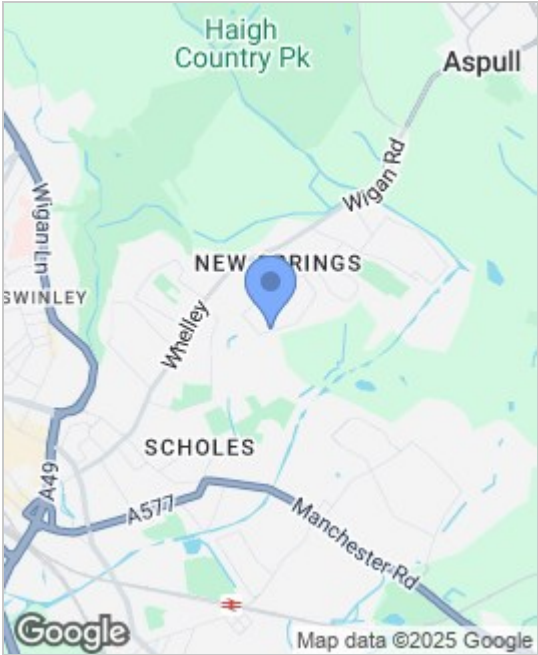
Bedroom 3

Bathroom

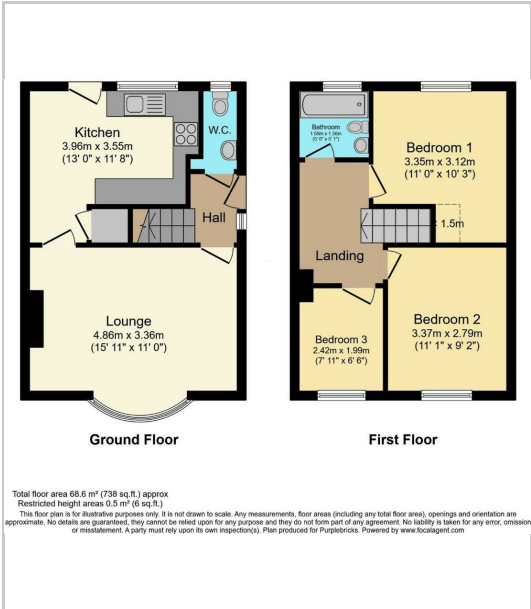
EXTERNAL

Rear Garden

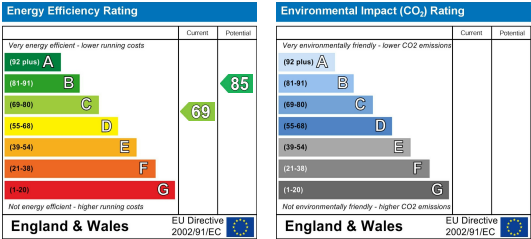
Area Map



Floor Plans



Energy Efficiency Graph



These particulars, whilst believed to be accurate are set out as a general outline only for guidance and do not constitute any part of an offer or contract. Intending purchasers should not rely on the representation of fact, but must satisfy themselves by inspection or otherwise as to their accuracy. No person in this firms employment has the authority to make or give any representation or warranty in relation to the property.

