



35 Railway Street

Springfield, Wigan, WN6 7LL

Price £250,000



Sapphire Homes are delighted to offer for sale this wonderfully appointed and deceptively spacious 3 bedroom 3 storey family homes situated on a small private development of 4 houses on Railway Street in the Springfield area of Wigan. A short walk from the town centre, close to local amenities and schools and also perfect for those requiring commuter links. Offering in excess of 1430 sq ft this generous and well appointed property features two en suite bathrooms, a modern fitted kitchen with dining area, generous lounge area with French doors leading out to the rear garden, three good sized double bedrooms and an impressive 4 piece family bathroom with walk in shower. The property has been tastefully decorated throughout, is warmed by gas central heating and benefits from UPVC double glazing throughout. Externally the property offers gardens to the front and rear elevations along with off road parking. Viewing is highly recommended to appreciate the property in full.



GROUND FLOOR

Entrance / Hallway

Kitchen / Diner

Lounge

W.C.

FIRST FLOOR

Landing

Bedroom 2

Bedroom 3

Bathroom

SECOND FLOOR

Master Bedroom

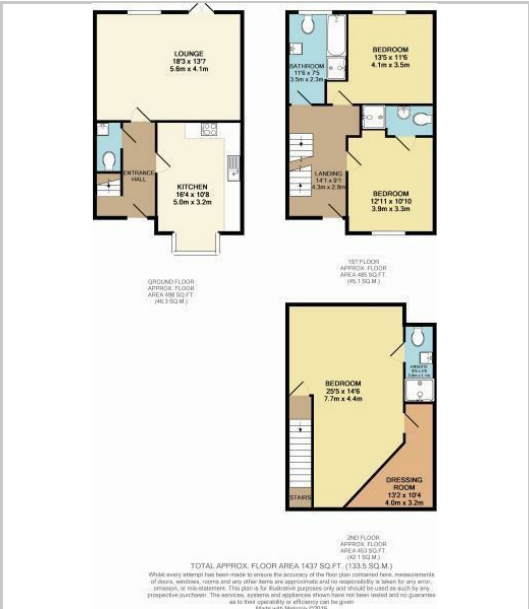
Ensuite

Walk in Robe

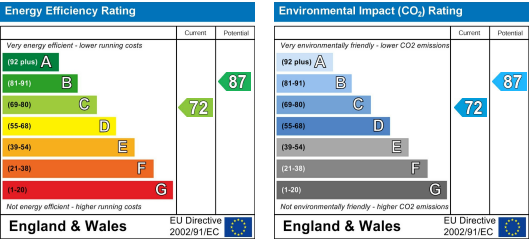
Area Map



Floor Plans



Energy Efficiency Graph



These particulars, whilst believed to be accurate are set out as a general outline only for guidance and do not constitute any part of an offer or contract. Intending purchasers should not rely on the representation of fact, but must satisfy themselves by inspection or otherwise as to their accuracy. No person in this firms employment has the authority to make or give any representation or warranty on behalf of the property.

