



8 Wright Street

Whelley, Wigan, WN1 3PJ

£950 PCM



Sapphire Homes are pleased to offer this deceptively spacious three bedroom mid terraced property that is situated on a quiet street in Whelley, which is perfectly positioned for local amenities, town centre transport links and local schools. The property is presented in an immaculate condition throughout including newly fitted flooring, kitchen, bathroom and a tasteful décor. The accommodation briefly comprises of entrance / hallway, living area, dining room / reception 2 and to the rear elevation there is a large brand new modern fitted kitchen / diner with access leading to rear garden. To the first floor the landing provides access three generous sized bedrooms and a stunning family bathroom with modern three piece suite in white with shower over bath. The property is warmed by Gas Central Heating and boasts double glazing and a modern tasteful decor throughout. Externally there is a low maintenance garden to the rear with gated access. Early internal viewings are highly recommended to appreciate in full. No Smokers.



GROUND FLOOR

Entrance / Hallway

Lounge

Reception 2

Kitchen / Diner

FIRST FLOOR

Landing

Bedroom 1

Bedroom 2

Bedroom 3

Bathroom

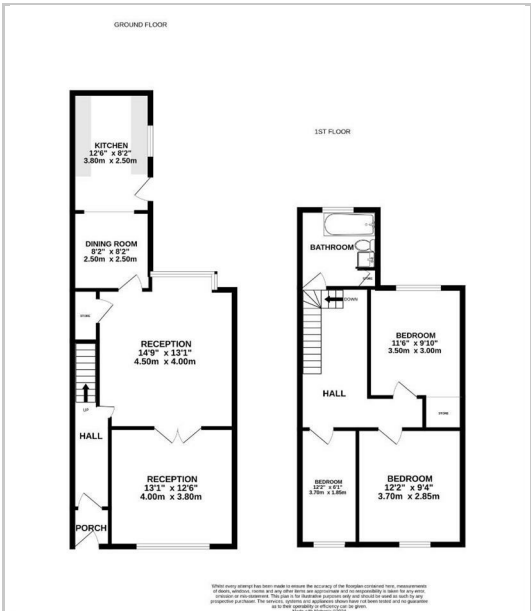
EXTERNAL

Rear Garden

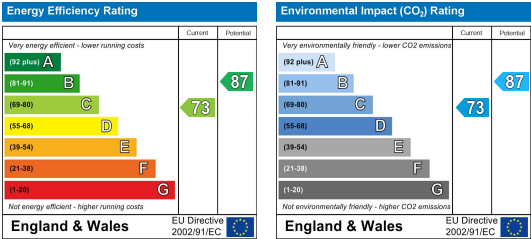
Area Map



Floor Plans



Energy Efficiency Graph



These particulars, whilst believed to be accurate are set out as a general outline only for guidance and do not constitute any part of an offer or contract. Intending purchasers should not rely on them as a representation of fact, but must satisfy themselves by inspection or otherwise as to their accuracy. No person in this firms employment has the authority to make or give any representation or warranty on behalf of the property.

