

NINE
MULBERRY SQUARE

RESIDENCE 32

TOTAL AREA

143.0 M² / 1,538.7 FT²

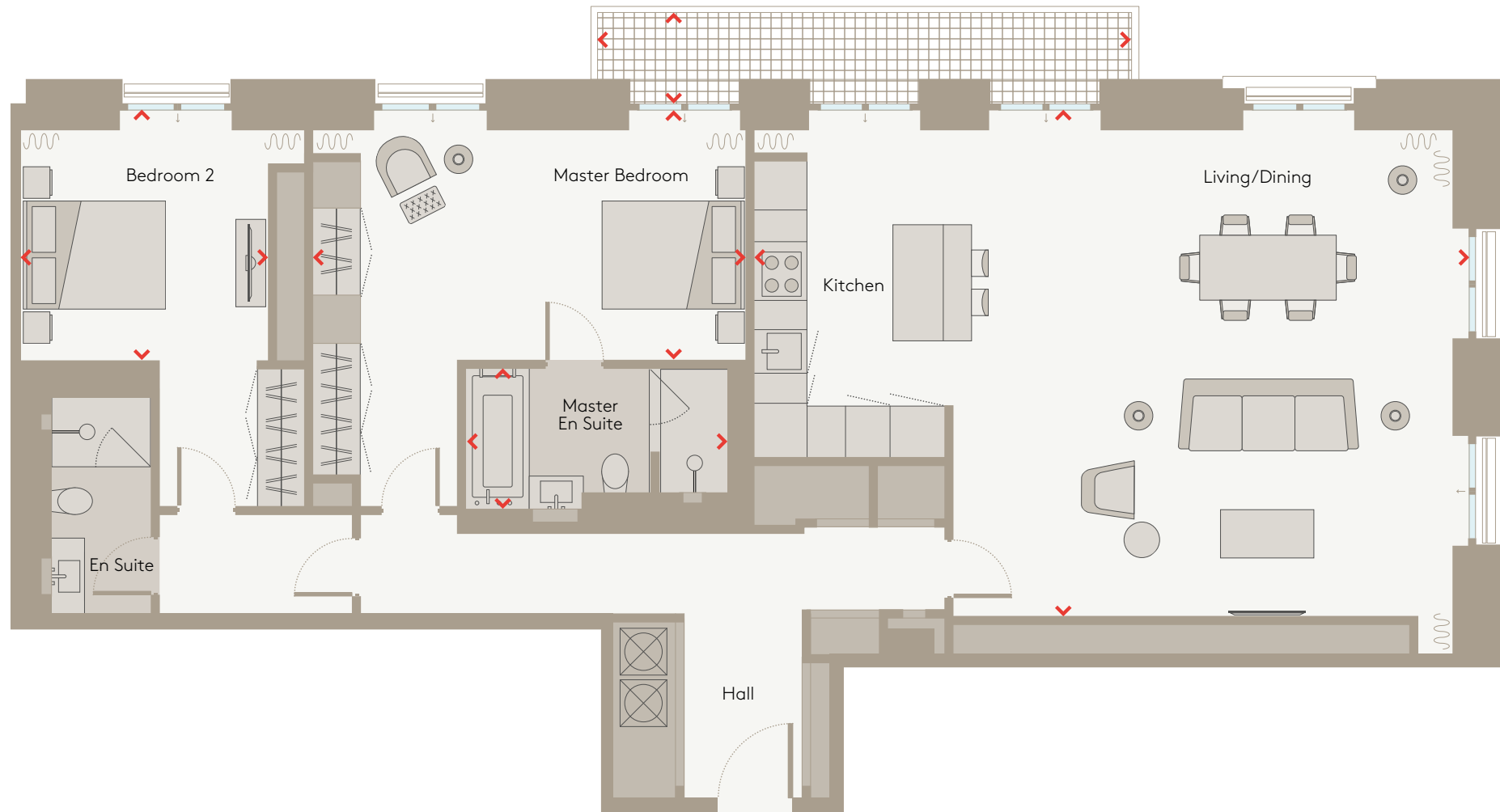


CHELSEA BARRACKS

LONDON SW1

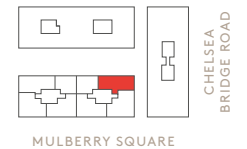
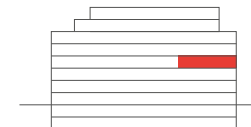
RESIDENCE 32

THIRD FLOOR



Dimensions

Living/Dining/Kitchen	9.8 x 6.9 m	32.0 x 22.7 ft	Bedroom 2	3.4 x 3.3 m	11.1 x 11.0 ft
Master Bedroom	5.9 x 3.4 m	19.2 x 11.1 ft	Balcony	7.3 x 1.3 m	23.8 x 4.2 ft
Master En Suite	3.5 x 1.9 m	11.6 x 6.2 ft			



Not to scale and illustrative, by way of example, only. These particulars (or any part of them) do not form part of any offer or contract and must not be relied upon as statements or representations of fact. These plans are illustrative only in depicting a typical layout for the accommodation. All items illustrated in the plans, including but not limited to any areas, measurements or distances shown are approximate and subject to change. Addresses are provisional and subject to approval by Westminster Council.