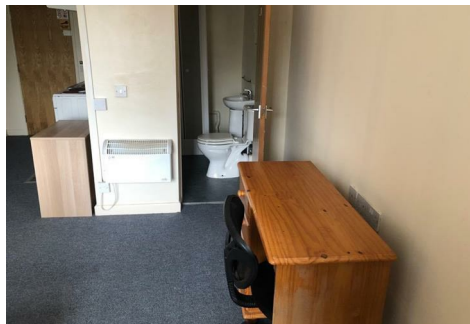


MATTHEW JAMES
Property Services



13-15 Manor Road, Coventry, CV1 2LH
£450 Per Calendar Month



FULLY FURNISHED STUDIO.....AVAILABLE NOW.....CITY CENTRE.....A chance to rent a studio minutes from the Train Station and City Centre in Coventry. There's numerous studios available within this development and they all come inclusive of water and wifi, just electric to pay and council tax if applicable. They comprise of a kitchen area, bed, wardrobe and a shower room. There's the option of car parking if required and there's a communal laundry room on site.

Floor Plan

Area Map




Energy Efficiency Graph

Energy Efficiency Rating		Current	Potential
<i>Very energy efficient - lower running costs</i>			
(92 plus) A			
(81-91) B			
(69-80) C			
(55-68) D			
(39-54) E			
(21-38) F			
(1-20) G			
<i>Not energy efficient - higher running costs</i>			
England & Wales		EU Directive 2002/91/EC 	
Environmental Impact (CO ₂) Rating		Current	Potential
<i>Very environmentally friendly - lower CO₂ emissions</i>			
(92 plus) A			
(81-91) B			
(69-80) C			
(55-68) D			
(39-54) E			
(21-38) F			
(1-20) G			
<i>Not environmentally friendly - higher CO₂ emissions</i>			
England & Wales		EU Directive 2002/91/EC 	

These particulars, whilst believed to be accurate are set out as a general outline only for guidance and do not constitute any part of an offer or contract. Intending purchasers should not rely on them as statements of representation of fact, but must satisfy themselves by inspection or otherwise as to their accuracy. No person in this firm's employment has the authority to make or give any representation or warranty in respect of the property.

CONTACT INFORMATION

 24a Warwick Row, Coventry CV1 1EY

 02477 170170

 info@matthewjames.uk.com

 www.matthewjames.uk.com

 Facebook

 Twitter