

Downside Crescent, London NW3 2AN

£625 Per Week

- 2 Bedroom Newly Refurbished Flat
- High Ceilings Throughout

- Available Immediately
- Wood Flooring

- Unfurnished
- Viewing Highly Recommended

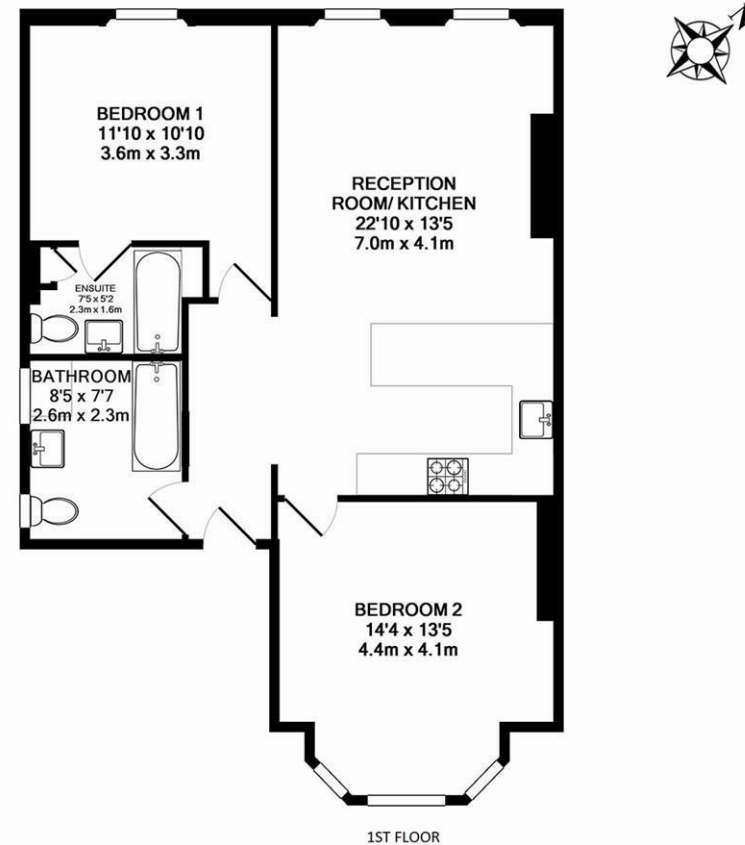


While every effort is made to ensure the accuracy of our particulars, they are intended as a guide only and their accuracy is in no way guaranteed. Photos and floor-plans are for illustrative purpose only. Appliances have not been tested. Prospective purchasers should satisfy themselves by inspection and relevant reporting of a property prior to purchase. This document does not form part of a legal contract.

5 Adelaide Road
London
Greater London
NW3 3QE
T: 0207 483 0685

E: belsizepark@stonesresidential.co.uk

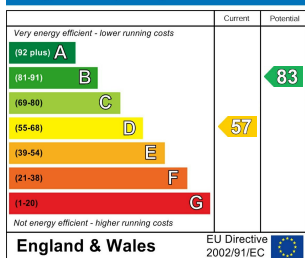
A brand newly refurbished apartment situated on the first floor of a red brick conversion conveniently located within a short walk of Haverstock Hill. The property benefits from having wood flooring throughout and comprises two good size double bedrooms, two bathrooms (one en-suite), spacious reception room with high ceilings and modern open plan kitchen with integrated appliances. Available immediately offered unfurnished.



1ST FLOOR
DOWNSIDE CRESCENT NW3
TOTAL APPROX. FLOOR AREA 797 SQ.FT. (74.0 SQ.M.)

Floorplans are for identification and guideline purposes only, not to scale. Compliant with RICS code of measuring practice. Floor plan supplied by Chik Chak Limited.

Energy Efficiency Rating



Environmental Impact (CO₂) Rating

