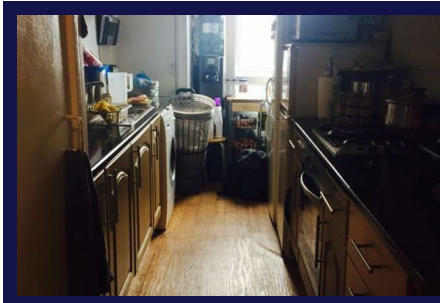
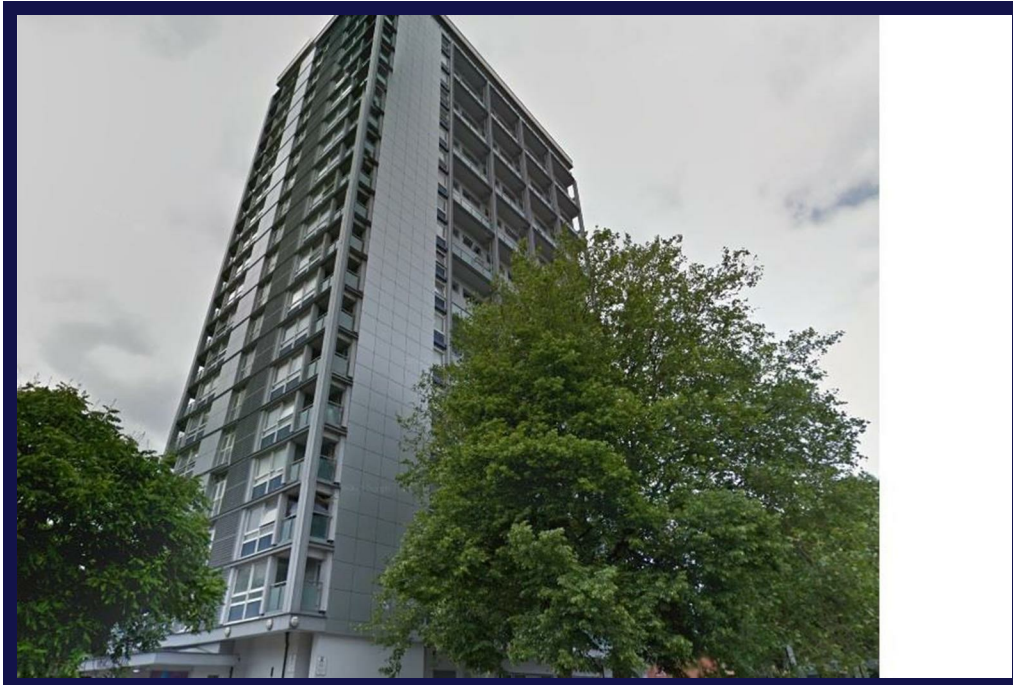


Wilmcote House, London, W2 5ST



Features:

- **Two Double Bedroom**
- **Good Condition**
- **Fully Furnished**
- **Neutrally Decorated**
- **Close To Tube**
- **Available Immediately**
- **Long/short Let**
- **Viewing Recommended**

Description:

A lovely Two bedroom flat on split level presented in good condition. The flat is fully furnished. Very close to Royal Oak tube station.

£425,000