



Pembroke Court, 15 New Church Road, HOVE, East Sussex, BN3 4AB

£209,950

mishon
welton

like this?

See more online at
mishonwelton.co.uk

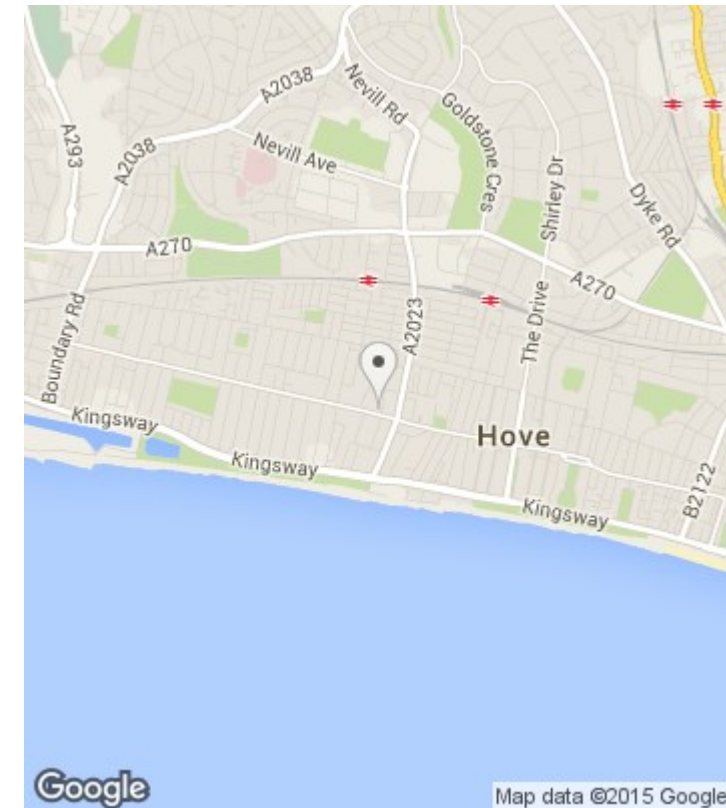


£209,950

- Central Hove Location
- Sea Views
- One Double Bedroom
- Luxury Bathroom
- Modern Fitted Kitchen
- Balcony
- 14' Lounge
- Share Of Freehold
- Chain Free

Description

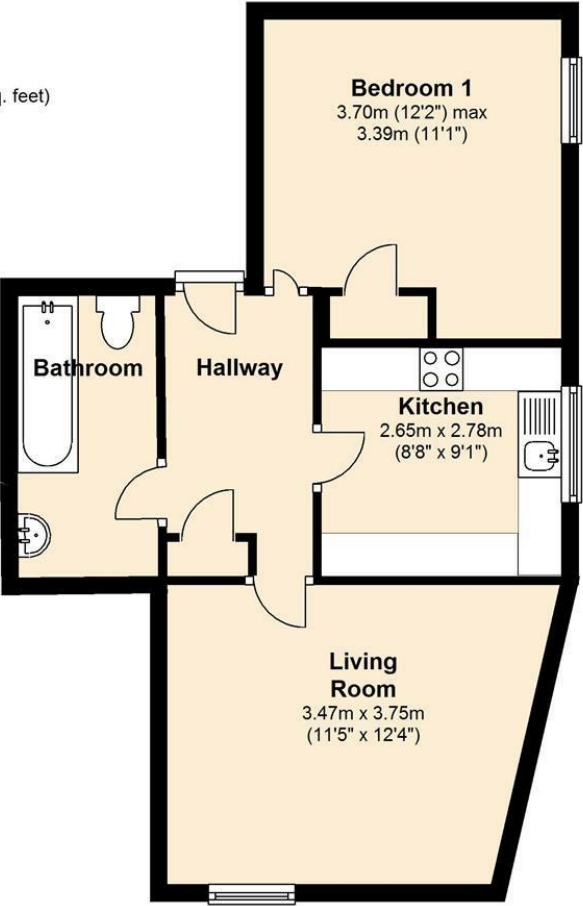
Situated in an extremely desirable location along the popular New Church Road is this charming fourth floor, one bedroom flat offering wonderful views across Hove and to the sea. Being offered to the market with vacant possession moving into the flat could come quicker than you think. Benefiting internally from a modern fitted kitchen, luxury bathroom, spacious double bedroom and a wonderful south facing lounge leading onto the balcony with sea views. The location of the flat is superb as it's along New Church Road with a large selection of shops, bars, restaurants and café's in close proximity, regular bus services in and out of the city and short stroll to the seafront. Viewing is highly advised to appreciate this property through sellers sole agents Mishon Welton.



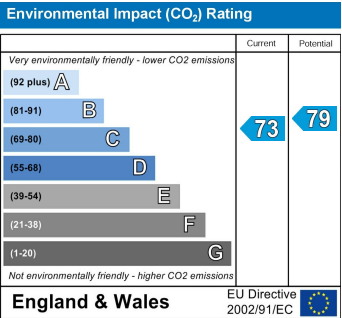
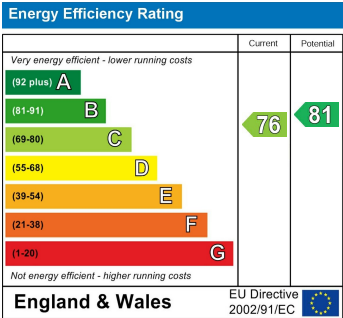
Area



Fourth Floor
Approx. 46.2 sq. metres (497.2 sq. feet)



Total area: approx. 46.2 sq. metres (497.2 sq. feet)



These floor plans are intended as a guide only. Dimensions are approximate and not to scale. Whilst we have taken every care with the preparation of these details, they do not form any part of an offer or contract and are for guidance only. We have not tested any apparatus, equipment, fittings or services and cannot verify they are in working order.



94 Church Road, Hove, East Sussex, BN3 2EB
TEL: 01273 778877
Info@mishonwelton.com
www.mishonwelton.com

mishon
welton